

side x side



MEGHAN SCRIBNER

Arts Integration Specialist  
Side x Side Inc.

 UNIVERSITY OF  
SOUTHERN MAINE

PORTLAND • GORHAM • LEWISTON • ONLINE



KAT ZAGARIA BUCKLEY

Director of Art Exhibitions and Outreach  
University of Southern Maine

# ABBE MUSEUM

CHRISTIANA BECKER

Curator of Education



# CENTER FOR MAINE CONTEMPORARY ART

MIA BOGYO

Education Programs Manager



# MAINE HISTORICAL SOCIETY

KATHLEEN FLYNN NEUMANN

Curator of Education &  
Public Programs



# PORTLAND MUSEUM OF ART

MEGHAN QUIGLEY GRAHAM  
Learning and Teaching Manager





### 150th Thoreau-Wabanaki Canoe Tour (2014)

During May 2014, an epic journey took place commemorating the travels of Henry David Thoreau and his Wabanaki Guide, Joe Polis, in the Maine Woods in July of 1857. This exhibit...

[Read More →](#)



### Aunt Lu: The Story of Princess Watawaso (2010-2011)

In this exhibit, you met Lucy Nicolar, a Penobscot performer known by her stage name, Princess Watawaso, but affectionately referred to by everyone as Aunt Lu. Born in 1882 on Indian...

[Read More →](#)



### Coming Home (2015)

From baskets to beadwork, woodcarvings to birchbark canoes, tools or artwork, objects are an important expression of Wabanaki culture. Since the arrival of the first European explorers more than 400 years...

[Read More →](#)



### Dr. Abbe's Stone Age Museum (ongoing)

Visit the original Abbe Museum at Sieur de Monts Spring in



### Emergence: Root Clubs of the Penobscot Nation (2018)



### Four Directions of Wabanaki Basketry (2013 – 2021)

# People of the First Light



*People of the First Light* shares a wide variety of content and perspectives around more than 12,000 years of history, conflict, adaptation, and survival in the Wabanaki homeland.



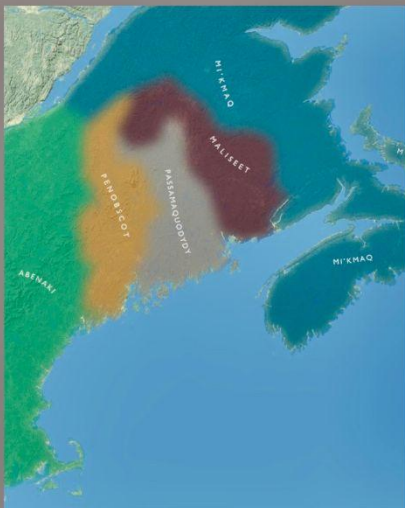
**people  
of the  
first light**

*People of the First Light*, the Abbe Museum's core exhibit, introduces visitors to the Wabanaki universe, engaging them with the culture and history of a people that is unfamiliar to many. Bringing together oral traditions, personal stories, cultural knowledge, language, and historical accounts with objects, photographs, multi-media, and digital interactives, *People of the First Light* shares a wide variety of content and perspectives around more than 12,000 years of history, conflict, adaptation, and survival in the Wabanaki homeland.

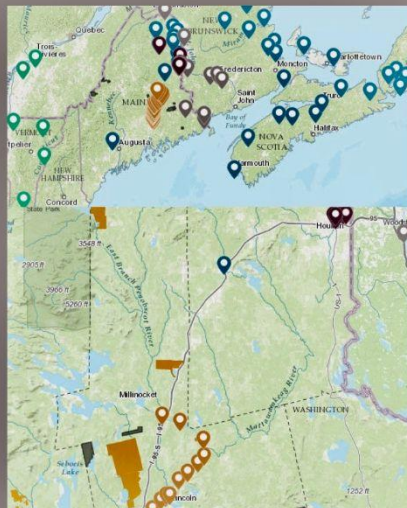
The design of the exhibit space was developed with a contemporary feel, shaped by the work of Wabanaki artists who have been a part of the design process from the beginning. The centerpiece of the exhibit is a two-story sculptural ash tree that draws the various sections of the exhibit together. Artwork and illustrations by Maliseet artist Gina Brooks, among other Wabanaki artists, are the foundation of a visual experience that reflects both Wabanaki traditions and current experiences.



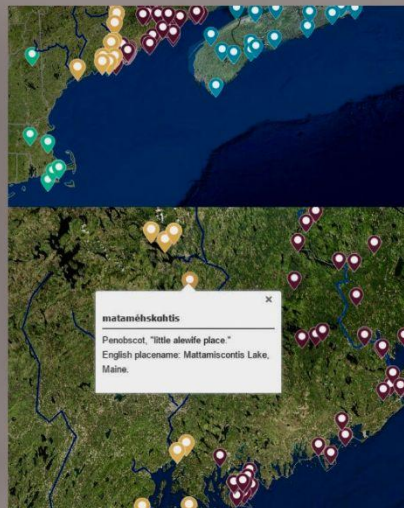
# Places of the Dawnland



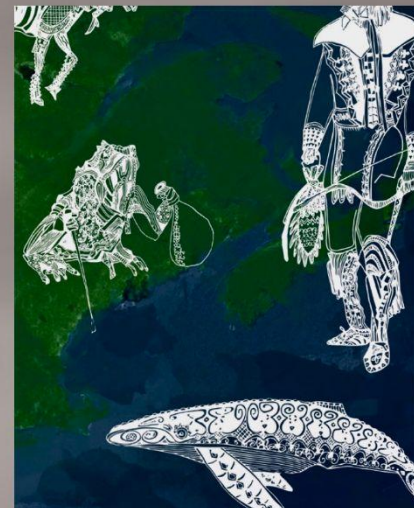
CHANGES IN THE  
DAWNLAND



WABANAKI TODAY



LANGUAGE &  
LANDSCAPES



STORIES OF THE  
DAWNLAND



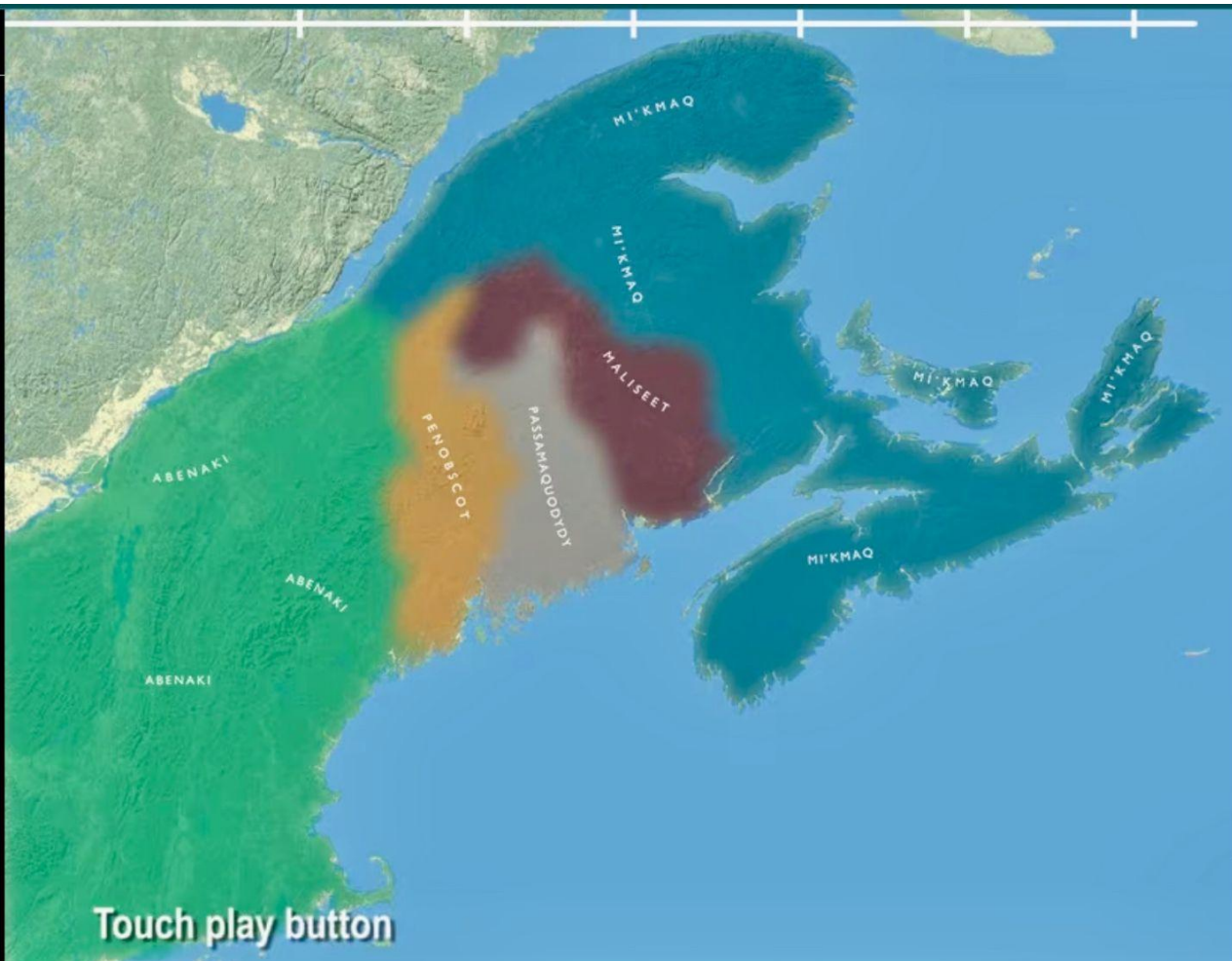


## Changes in the Dawnland

Tap the play button to animate the map.

For thousands of generations, Wabanaki people have lived across what is now northern New England, the Canadian Maritimes, and Quebec. The arrival of Europeans more than 500 years ago began a process of dramatic and destructive loss that continues today.

Much of the Wabanaki homeland was taken through a series of treaties, negotiated between various Wabanaki groups and the French, English, Massachusetts, Maine, and United States governments. Wabanaki and non-Native signatories often had very different ideas and interpretations of



Touch play button

Introduction

Penobscot Nation

Passamaquoddy Nation

Mi'kmaq Nation

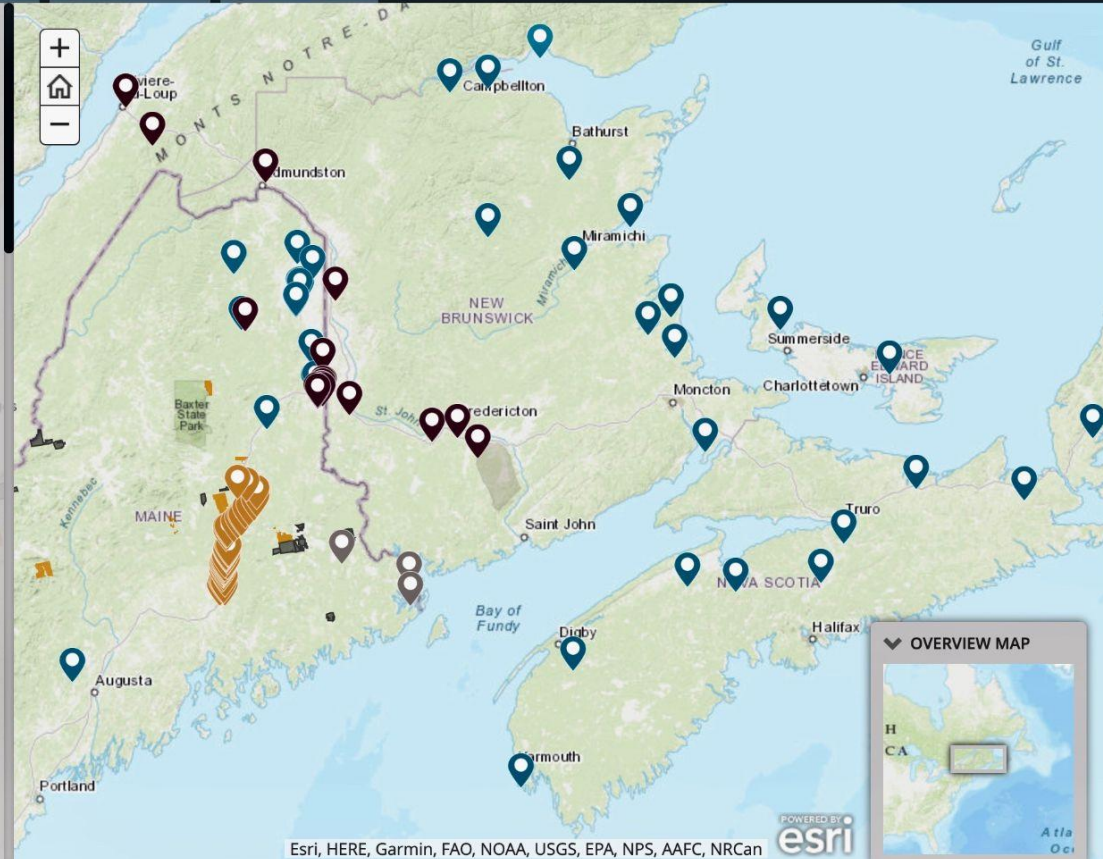
Maliseet Nation

Abenaki Nation

The Wabanaki Nations – **Abenaki, Maliseet, Mi'kmaq, Passamaquoddy, and Penobscot** – are thriving and growing in Maine and beyond.

We invite you to visit, at least virtually, the many contemporary Wabanaki communities across Kkuwaponahkik, “the land of the dawn.”

- **Click on a community name on a TAB above** to learn more about the people and places of the Penobscot, Passamaquoddy, Mi'kmaq, Maliseet, and Abenaki Nations.
- **Tap on the map markers** to see details about tribal communities and land holdings.



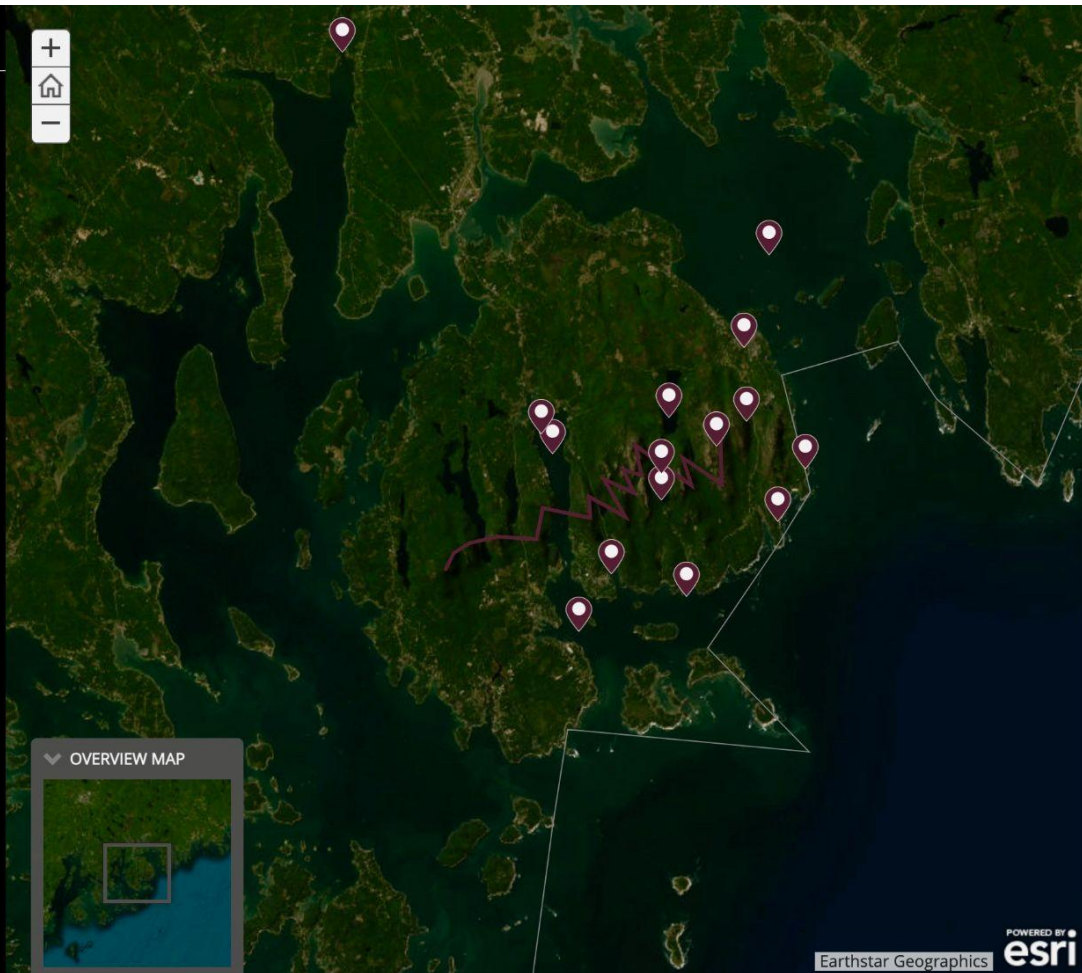
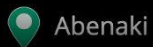
## Languages and Landscapes

Wabanaki place names record generations of knowledge and a deep connection their homeland.

We invite you to travel across the landscape of Ckuwaponahkik, "the land of the dawn," and explore it from a Wabanaki perspective.

- **Tap a map marker** to see the Abenaki, Passamaquoddy-Maliseet, Mi'kmaq, or Penobscot name for a place and learn more about the meaning of the name.
- **Zoom out** to go farther afield, **swipe across** the map, and **zoom in** when you see something interesting!

### LANGUAGES LEGEND



## Stories of the Dawnland

The Wabanaki have many stories, passed down from one generation to the next, about the landscape of Ckuwaponahkik. Some explain how rivers or islands or mountains were formed. Others tell of the connections between people, animals, and place, or explain the role of the land in Wabanaki history.

Here are a few of these stories. These written versions are adapted and abbreviated, providing just a glimpse of the full narratives. Their traditional, dynamic form can only be fully experienced when shared by a gifted Wabanaki storyteller.

- **Start scrolling down** to read the stories and to interact with the map



15



# Educator Resources

As a leader in the state for Wabanaki education, the Abbe Museum offers many resources for teachers. We offer a wide range of classroom and reference material for use by educators, available for download. The Abbe also provides professional development opportunities for teachers, including workshops and in-service training.

## Background Material and Resources

- [Announcement of U.S. Support for the United Nations Declaration on the Rights of Indigenous Peoples](#)
- [Asticou's Island Domain: Wabanaki Peoples at Mount Desert Island 1500-2000](#)
- [Evaluating Resources](#)
- [Final Report of the Wabanaki Studies Commission October 2003](#)
- [Headline News exhibit catalog](#)
- [Kikehtahsuwiv: It Heals exhibit](#)
- [N'tolonapemk Our Relatives Place exhibit](#)
- [N'tolonapemk informational booklet](#)
- [Naming the Dawnland - Wabanaki Place Names on Mount Desert Island](#)
- [Online Resources for Teaching Wabanaki Studies](#)
- [People of the First Light Encounters Allies and Adversaries](#)
- [People of the First Light Encounters Artists and Traders](#)
- [People of the First Light Encounters Colonization and Human Rights](#)
- [People of the First Light Encounters Penobscot River](#)
- [People of the First Light main exhibit text](#)

## General Lesson Plans - All Grades

- [Giving Thanks](#)
- [Passamaquoddy Kit Materials](#)
- [Stereotyping and Racism Curriculum](#)
- [Stereotyping Narrative](#)
- [Thanksgiving quiz cards](#)

## Lesson Plans - PreK to Grade 2

- [Animal Names \(scroll below for audio files\)](#)
- [Wabanaki Flag](#)
- [Wabanaki Flag descriptions](#)

## Lesson Plans - Grades 3-5

- [Archaeology](#)
- [Pre-Contact Life, Micmac](#)
- [Atlatl Data Collection Form](#)

# K-12 School Programs

The Abbe Museum specializes in the use of objects and student-guided exploration to create memorable experiences to enhance your students' learning about the Wabanaki tribes, past, and present. Available in-person at the Museum or in a digital format, our current programs include:

## Visiting The Abbe\*

Students participate in a guided tour of the museum's downtown location. We can accommodate a maximum of 50 students at one time, and require at least 1 chaperone for every 10 students. Larger groups can be arranged with staggered start times.

*\*Not available in digital format.*

## Layers In Time

During this interactive program, students will not only learn about who the Wabanaki are, but also will look at examples of Wabanaki material culture and technology and how it relates to the four things that all cultures need to survive. Students will discover how the environment of Maine was and still is utilized to meet the needs of the Wabanaki people. We will discuss how traditional Wabanaki tools and technologies are still used today and how they have been innovated. Suggested grade level: 2-5th grade.

## Deconstructing Stereotypes

During this interactive program, Abbe Museum educators examine and explain stereotypes commonly held about Native Americans or Indigenous Peoples of North America. As a group, we define what a stereotype is and explore our initial thoughts when we hear the word "Native American." Through discussion, students will have the opportunity to directly address stereotypes of Native American culture they may have encountered. We also compare and contrast what are examples of appreciation versus appropriation of Indigenous culture. Suggested grade level: 7-12th grade.

**Rates & Policies:** *Additional fees will be charged for reservation requests scheduled outside of standard operating hours\*, for reservation requests made within 7 days of the requested date (\$50.00), and for any alterations to reservations without advanced notice (\$25.00). Cancellations must be received at least 48 hours before the scheduled time. Cancellations within 48 hours and no-shows will forfeit their deposit. We reserve the right to alter, adjust, or cancel reservations if necessary. **Fifty Percent (50%) of your payment is due upon signing of the agreement. The rest of the payment is due upon arrival unless otherwise arranged.***

*\*Fees will be dependent on type of program requested, date, and time of request*

For more information or to make a reservation, please contact us at [educator@abbemuseum.org](mailto:educator@abbemuseum.org) or submit a school program request using the button below.

SUBMIT SCHOOL PROGRAM REQUEST







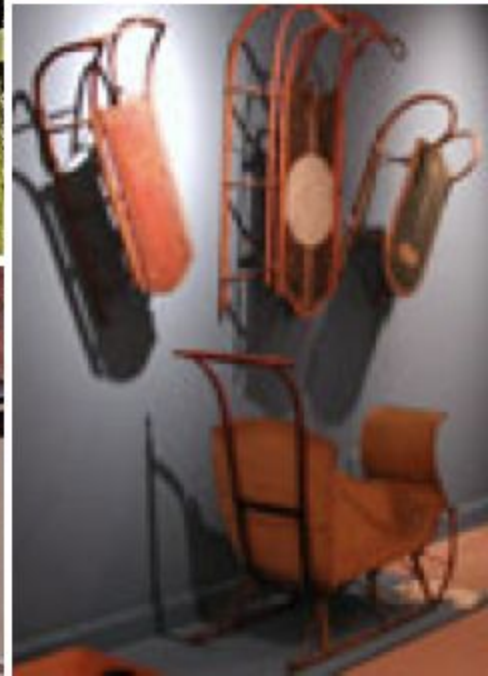




---

# Maine Historical Society

- Library
- Museum
- Wadsworth-Longfellow House & Longfellow Garden
- Maine Memory Network



# Maine Memory Network (MMN)

- online database, 270+ collecting organizations from across the state of Maine
- 45,000+ curated items
- keyword search and browse features
- save and share historical items in albums
- [www.mainememory.net](http://www.mainememory.net)



# Virtual Learning Hub

- Virtual Field Trips
- Video Mini-Lessons
- Online Exhibits and Response Questions
- Links to Lesson Plans/Lesson Plan Library









portlandmuseum



Liked by [stephanie.visciglia](#) and others

**portlandmuseum** "Art is the tool that students didn't know they needed to make positive changes in their lives."

Emily Serway has taught art for every grade from preschool and up and is now working with high school students at Deering High School in Portland. A photograph of her student's impressive ceramic cake is hung up alongside 80+ artworks in this year's Youth Art Month exhibition. Learn more about Emily's journey to becoming an art teacher through the link in bio and check out YAM in-person and digitally before it's last day on view, April 2, 2023.

[View 1 comment](#)

March 27



# SHARING A SENSE OF SPACE



THIS PMA CLASSROOM LESSON WAS DEVELOPED IN COLLABORATION WITH THE MAINE MARITIME MUSEUM.



## THEMES

- COMMODITIES  
GIFTS  
SOUVENIRS
- DESIGN
- SENSE OF PLACE:  
HOW A PLACE BRINGS  
MEANING TO  
DIFFERENT PEOPLE  
HOW PEOPLE USE  
OBJECTS TO CONNECT  
TO SPECIFIC PLACES

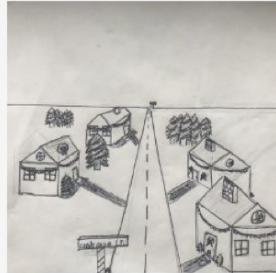
Liverpool Type (England, circa 1790-1840), Pitcher: Signals at Portland Observatory, after 1807, creamware with transfer-printed decoration, 9 x 8 1/2 inches. Gift of Mrs. James McKinley Rose in memory of her father, William B. Goodwin, 1976.12. Image courtesy Luc Demers

Wheelock Company (Germany), Portland Head Light Souvenir Vase, white porcelain transferware, 2 1/4-inch diameter, 3 1/4-inch height, Charles E. Burden Collection, 95.091.26.29. Maine Maritime Museum

## K-4th Grade



**Noah Drahelm, *Autumn Trees***  
4th Grade  
Watercolor, colored pencil, sharpie  
Wells Elementary School  
Wells, ME  
York County  
Teacher: Jenna Larochelle-Parry



**Tucker H., *Christmas Town***  
4th Grade  
Graphite and marker  
Berwick Academy  
South Berwick, ME  
York County  
Teacher: Naomi Ellsworth



**Jaylon Henry, *Suns of Ireland***  
Kindergarten  
Foam print with marker  
Canal School  
Westbrook, ME  
Cumberland County  
Teacher: Melissa Perkins



**Iris Hurd, *Untitled Landscape***  
2nd Grade  
Acrylic  
Songo Locks Elementary School  
Naples, ME  
Cumberland County  
Teacher: Evelyn Abrams



